

Quick Start Guide Stylus 720 SW

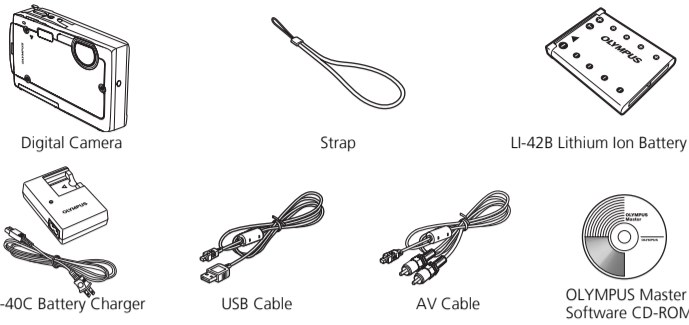
Start Here

For more information, please refer to the Basic & Advanced Manuals or visit: www.olympusamerica.com/support

OLYMPUS IMAGING AMERICA INC.

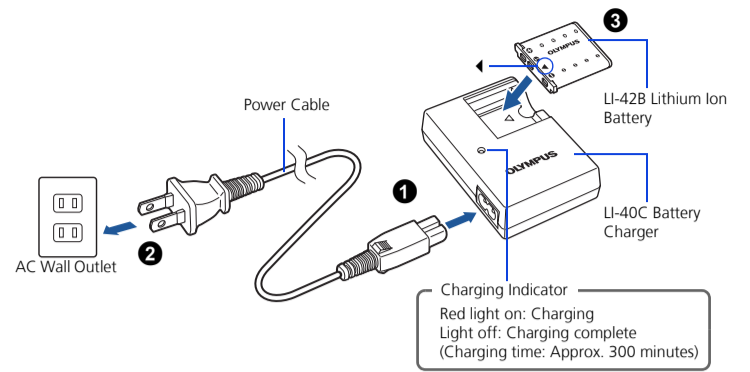
BEFORE YOU BEGIN

Gather these items (box contents)



Items not shown: Advanced Manual (CD-ROM), Basic Manual, warranty card. Contents may vary depending on purchase location.

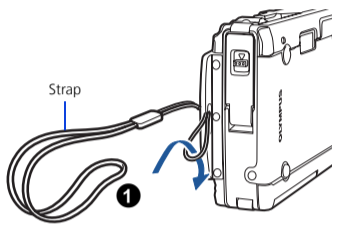
Charge the battery (recommended*)



*Battery comes partially charged.

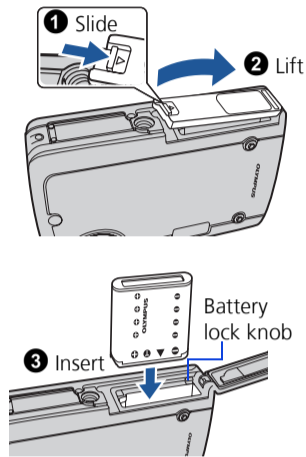
1 GET STARTED

a. Attach the strap



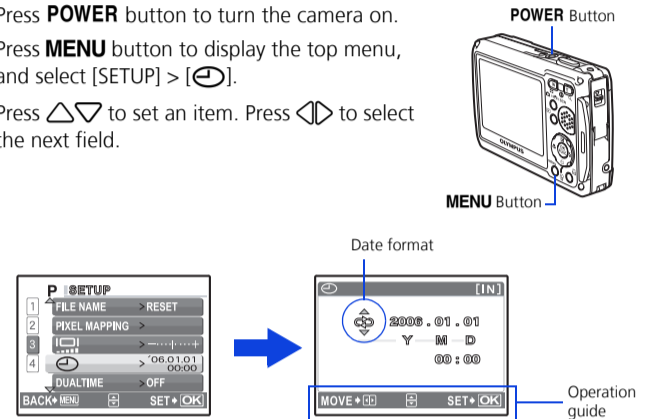
- Pull the strap tight so that it does not come loose.

b. Insert the battery



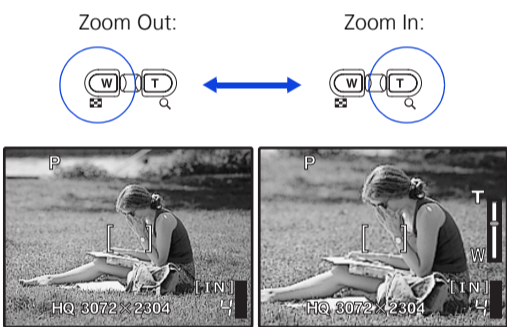
c. Set the date and time

- 1 Press **POWER** button to turn the camera on.
- 2 Press **MENU** button to display the top menu, and select [SETUP] > [CLOCK].
- 3 Press Δ / ∇ to set an item. Press \leftarrow / \rightarrow to select the next field.

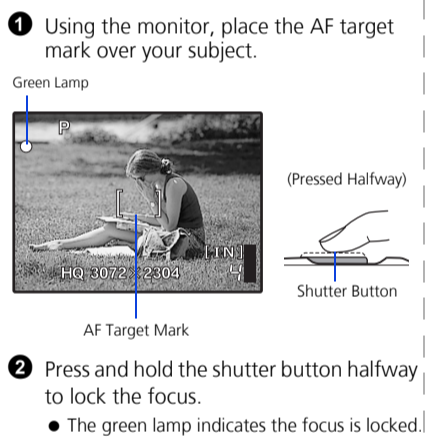


2 TAKE A PICTURE

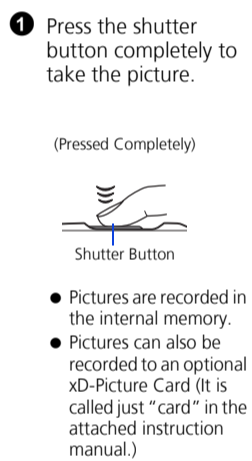
a. Zoom



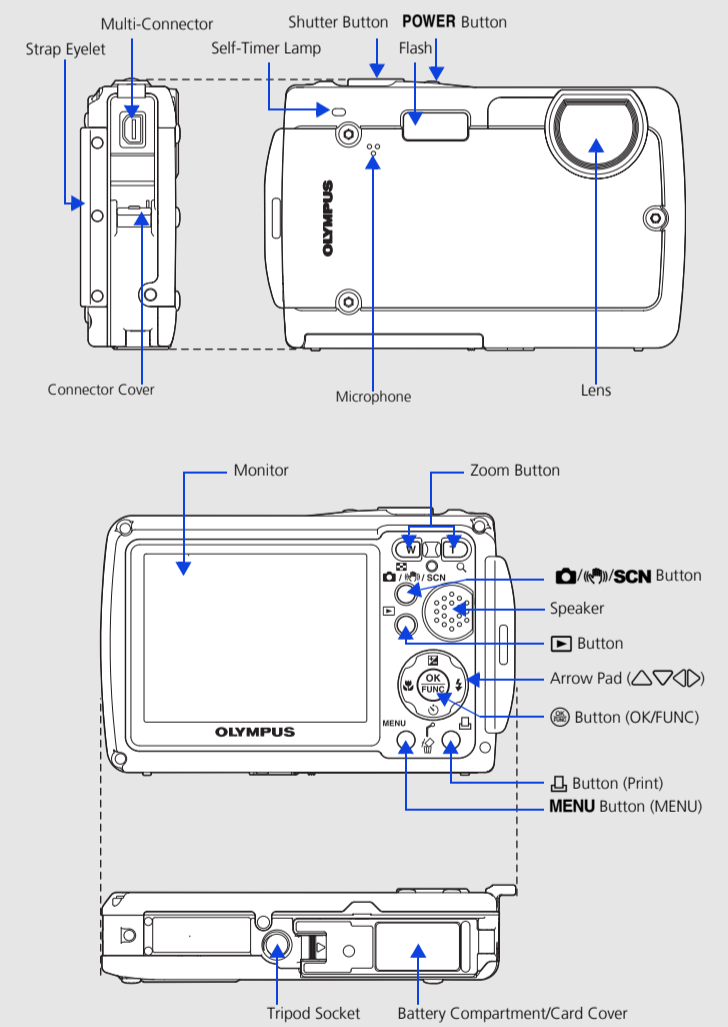
b. Focus



c. Take the picture

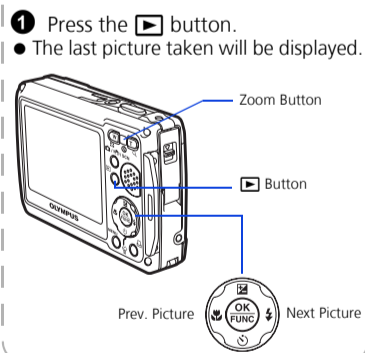


CAMERA DIAGRAM

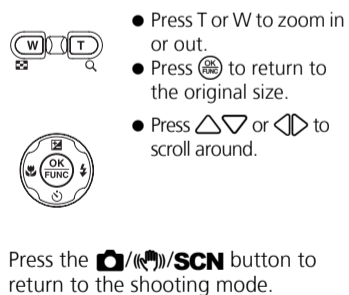


3 REVIEW OR ERASE A PICTURE

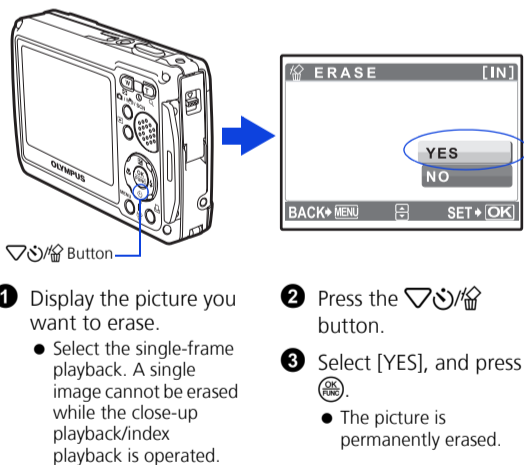
a. Select the playback mode



b. Take a closer look



c. To erase a picture

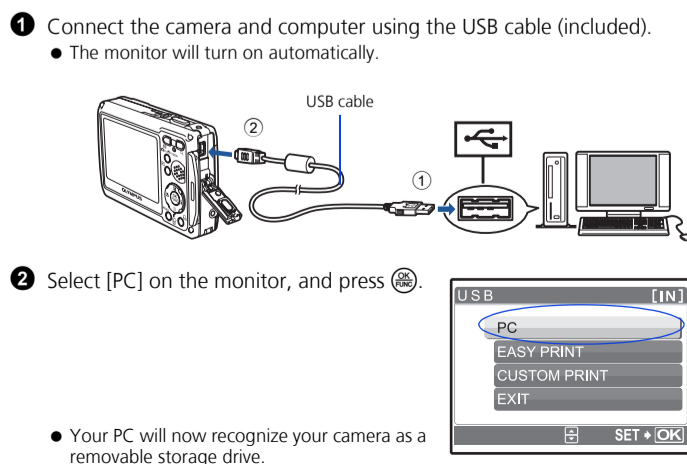


4 TRANSFER IMAGES

a. Install the software

- 1 Insert the OLYMPUS Master CD-ROM.
 - 2 **Windows:** Click the "OLYMPUS Master" button.
Macintosh: Double-click the "Installer" icon.
 - 3 Simply follow the on-screen instructions.
- Remember to register your camera when you install OLYMPUS Master or visit: www.olympusamerica.com/prodreg

b. Connect the camera to the computer



c. Transfer images to the computer

- 1 With the camera now connected, open OLYMPUS Master. The [Transfer Images] window is displayed.
 - 2 Select the images you want to transfer, and click the [Transfer Images] button.
- If the [Transfer Images] window is not displayed automatically:
- a. Click the "Transfer Images" icon on the OLYMPUS Master main menu.
 - b. Click the "From Camera" icon.